





📍 18 The Glebe, All Cannings, All Cannings, Wiltshire, SN10 3NW

🏠 Guide Price £600,000

A spacious 5 bedroom family home with a lovely established garden, set in the highly desirable Wiltshire village of All Cannings.

- 5 Bedroom Modern Home
- Highly Regarded Village In The Pewsey Vale
- 2 Reception Rooms
- 16ft Refitted Kitchen With Granite Worktops
- Separate Utility & Cloakroom
- Family Bathroom & En Suite
- Double Garage
- 2 Parking Spaces
- North West Facing Rear Garden

🏡 Freehold

🏠 EPC Rating D





A well positioned 5 bedroom modern detached family home set in the highly sought after village of All Cannings, with fabulous walks on the doorstep through the wonderful Pewsey Vale (an Area Of Outstanding Natural Beauty).

This spacious home was built in the late 1990s and is presented in good order. Internally a light entrance hall with tiled flooring and downstairs cloakroom, leads off to a delightful bay fronted sitting room with an electric fire and attractive 'Minster' style stone surround. From here, glass panelled double doors open into a separate dining room that overlooks the well maintained garden. A 16ft open plan kitchen/breakfast room features solid granite worktops, an induction hob, double oven and tiled flooring. There is a very handy utility room with an additional WC and a door into the integral double garage (which has light, power, eaves storage, one electric door and one manual door).

On the first floor, a large open landing has doors leading to the 5 bedrooms. There are 4 doubles plus a single room that could be used as a study if one preferred, and 4 of the bedrooms come with fitted double wardrobes. The main bedroom enjoys an en suite shower room (refitted in 2015), and there a modern family bathroom with an electric shower over the bath.

Outside, there is driveway parking for 2 cars with scope to add an extra parking space if required. The enclosed rear garden has been lovingly created and maintained by the current owners and is set over 2 tiers with a top patio sun terrace and shaped lawn, an espalier apple tree, rose arches. There is a step down to a greenhouse with power, a concealed oil tank and an abundance of colourful plants and mature shrubs. A rear gate leads onto a footpath providing easy access back to the centre of the village and primary school.

#### **Situation**

The property is beautifully situated in the village of All Cannings; a picturesque village set in the heart of the highly sought after Pewsey Vale. Wonderful countryside walks and cycle rides are on the doorstep. Village amenities include a wonderful primary school, allotments, a community shop, a church and a thriving public house called The Kings Arms. The historic market towns of Marlborough and Devizes are located nearby. Devizes has much to offer with a wide range of facilities including shops, supermarkets, a leisure centre, schools for all ages, a theatre, cinema and a museum. There is a nearby mainline rail service at Pewsey (approx 7 miles) to London Paddington.

#### **Property Information**

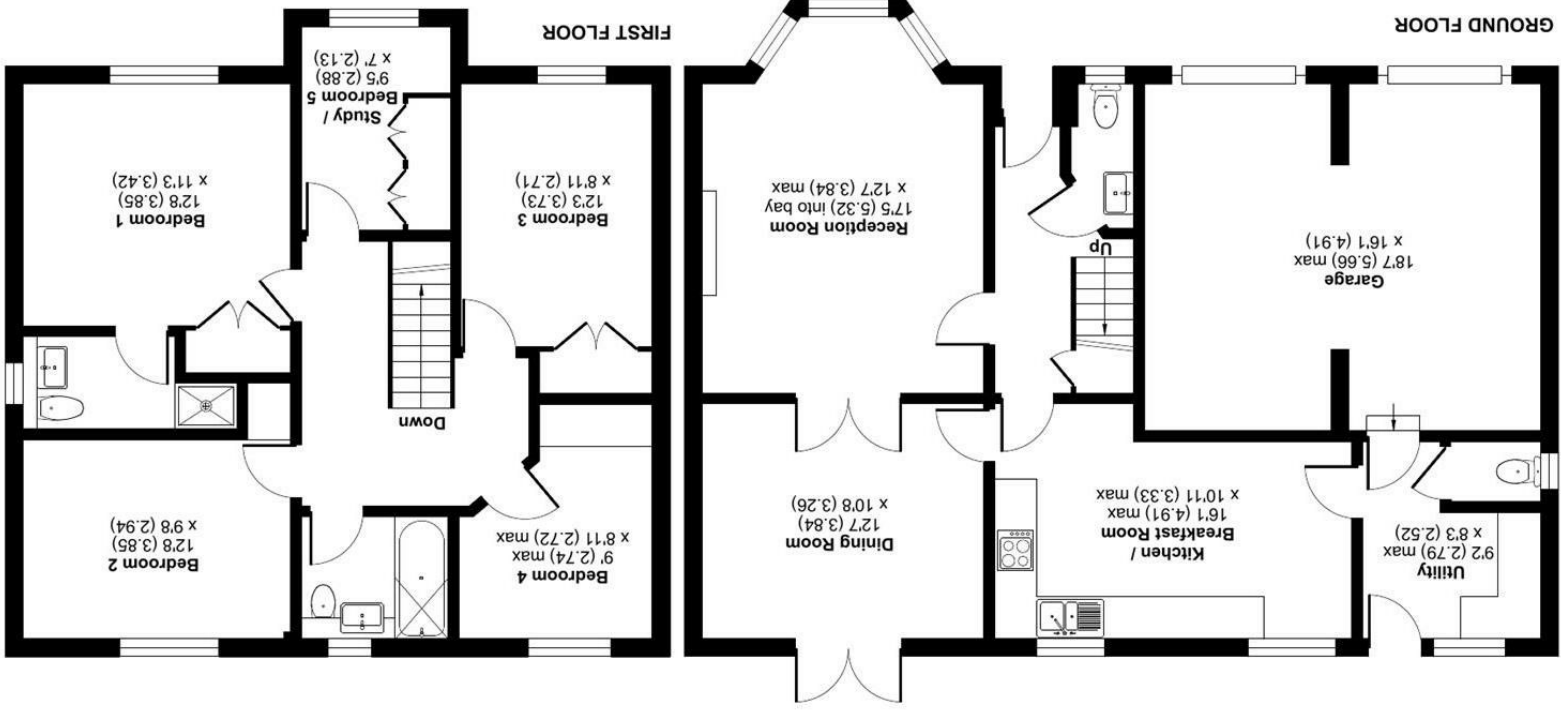
Services: Oil fired central heating, mains water, drainage and electricity are all connected.

Council Tax: Band F



# The Glebe, All Cannings, Deizes, SN10

Approximate Area = 1473 sq ft / 136.8 sq m  
Garage = 296 sq ft / 27.4 sq m  
Total = 1769 sq ft / 164.3 sq m  
For identification only - Not to scale



Floor plan produced in accordance with RICS Property Measurement 2nd Edition, incorporating International Property Measurement Standards (IPMS2 Residential). © nichecom 2025. Produced for Strakers. REF: 1268805

Disclaimer These particulars, whilst believed to be accurate are set out as a general outline only for guidance and do not constitute any part of an offer or contract. Intending purchasers should not rely on them as statements of representation of fact, but must satisfy themselves by inspection or otherwise as to their accuracy. No person in this firm's employment has the authority to make or give any representation or warranty in respect of the property. All measurements and distances are approximate only. Your home is at risk if you do not keep up repayments on a mortgage or other loan secured on it.